

HAFCO

METALMASTER



Edition : 1.0
Date: (02/25)

Instruction Manual

DELUXE BELT & DISC LINISHING ATTACHMENT

DLA-915, DLA-1220

Order Code: (L0930 & L0931)

SAFETY INSTRUCTIONS

DO NOT use this machine unless you have been instructed in its safe use and operation and have read and understood this manual



Safety glasses must be worn at all times in work areas



Long and loose hair must be contained or restrained



Sturdy footwear must be worn at all times in work areas



Close fitting/protective clothing must be worn



Rings and jewellery must not be worn.



A mask must be worn when excessive airborne dust is created

PRE-OPERATIONAL SAFETY CHECKS

- ✓ Ensure you are familiar with the operation of the ON/OFF DOL switch and emergency stop.
- ✓ Check the finishing belt is in a serviceable condition with no fraying edge, tears or holes
- ✓ Ensure the operator is positioned out of direct line of abrasive belt at all times.
- ✓ Ensure dust extraction is on before operating sanding machine.
- ✓ Faulty equipment must not be used. Immediately report suspect machinery.
- ✓ Ensure material is well supported – use roller/support stand/s for longer lengths.

OPERATIONAL SAFETY CHECKS

- ✓ Allow machine to reach maximum revolutions before operating to avoid overloading.
- ✓ Hold material firmly against stops or table before applying pressure on abrasive belt.
- ✓ Keep fingers clear of the finishing belt while sanding.
- ✓ NEVER attempt to sand small items or try to sharpen metal items.
- ✓ Never leave the machine while it is running.
- ✓ Before making adjustments switch off and bring the machine to a complete standstill.

DON'T

- ✗ Operate equipment without wearing appropriate PPE
- ✗ Use the wrong type of belt or disc for the operation.
- ✗ Attempt to sand very small items or use heavy pressure.
- ✗ Leave the machine running unattended.
- ✗ Use faulty equipment. Immediately report any suspect equipment & apply a "DO NOT USE" tag

POTENTIAL HAZARDS

- | | | |
|--|--|--|
| <input type="checkbox"/> Exposure to moving, abrasive and rotating parts | <input type="checkbox"/> Burns to skin | |
| <input type="checkbox"/> Eye injuries | <input type="checkbox"/> Ejected waste | <input type="checkbox"/> Excessive dusts |
| <input type="checkbox"/> Pinch and squash | | |

SAFETY INSTRUCTIONS

WARNING: When using electric tools basic safety precautions should always be followed to reduce the risk of fire, electric shock and personal injury including the following. Read all these instructions before attempting to operate this product and save these instructions.

SAFE OPERATION

- 1. KEEP WORK AREA CLEAR:** Cluttered areas and benches invites injuries.
- 2. WORK AREA ENVIRONMENT:** Do not expose tools to rain. Do not use tools in damp or wet locations. Keep work area well lit. Do not use tools in the presence of flammable liquids or gases.
- 3. GUARD AGAINST ELECTRIC SHOCK:** Avoid contact with earthed or grounded surfaces (e.g. pipes, radiators, ranges, refrigerators).
- 4. KEEP OTHER PERSONS AWAY:** Do not let persons, especially children, not involved in the work touch the tool or the extension lead and keep them away from the work area.
- 5. STORE IDLE TOOLS:** When not in use, tool should be stored in a dry locked-up place, out of reach of children.
- 6. DO NOT FORCE THE TOOL:** It will do the job better and safer at the rate for which it was intended.
- 7. USE THE RIGHT TOOL:** Do not force tools to do the job of a heavy duty tool. Do not use tools for purposes not intended.
- 8. DRESS PROPERLY;** Do not wear loose clothing or jewelry, they can be caught in moving parts. Non-skid footwear is recommended.
- 9. USE PROTECTIVE EQUIPMENT:** Use safety glasses. Use face or dust mask if working operations create dust.
- 10. MAINTAIN TOOLS WITH CARE:** Keep cutting tools sharp and clean for better and safer performance. Follow instruction for lubricating and changing accessories. Inspect tool cords periodically and if damaged have them repaired by an authorized service facility. Inspect extension cords periodically and replace if damaged. Keep handles dry, clean and free from oil and grease.
- 11. DISCONNECT TOOLS:** When not in use, before servicing and when changing accessories.
- 12. REMOVE KEYS AND WRENCHES:** Form the habit of checking to see that keys and adjusting wrenches are removed from the tool before turning it on.
- 13. AVOID UNINTENTIONAL STARTING:** Ensure switch is in "off" position before connecting to the power.
- 14. STAY ALERT:** Watch what you are doing, use common sense and do not operate the tool when you are tired.
- 15. CHECK DAMAGED PARTS:** Before further use of tool, it should be carefully checked to determine that it will operate properly and perform its intended function. Check for alignment of moving parts, binding of moving parts, breakage of parts, mounting and any other conditions that may affect its operation. A guard or other part that is damaged should be properly repaired or replaced by an authorized service centre unless otherwise indicated in this instruction manual. Have defective switches replaced by an authorized service centre. Do not use the tool if the switch does not turn it on and off.
- 16. WARNING:** The use of any accessory or attachment other than one recommended in this instruction manual may present a risk of personal injury.



WARNING!

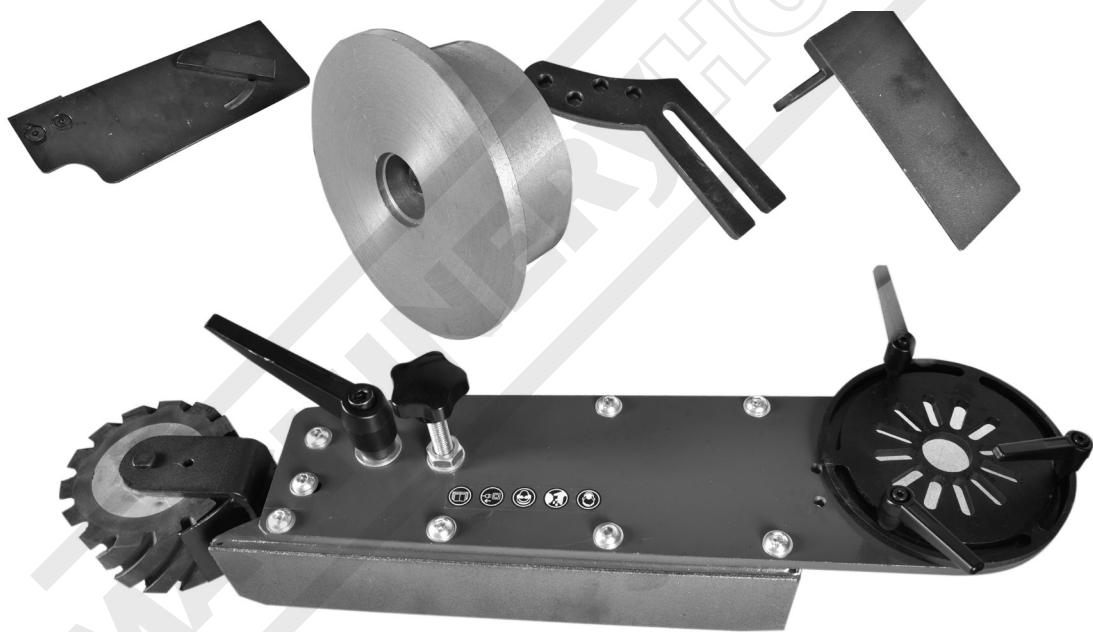
Abrasive belts are dangerous and can cause serious injury if fingers or clothing are caught in the belt. Take care to ensure that safety is followed at all times when operating the machine.

SPECIFICATIONS

Order Code	L0930	L0931
MODEL	DLA-915	DLA-1220
Belt Size	915 x 50mm	1220 x 50mm
Disc Diameter	Ø178mm	
Suits Grinder Size	Ø200mm	

ASSEMBLY INSTRUCTIONS

1. Layout the parts of the finishing attachment on a flat surface.



WARNING!

Machines are safeguarded to protect the operator from injury or death with the placement of guards. Machines must not be operated with the guards removed or damaged.

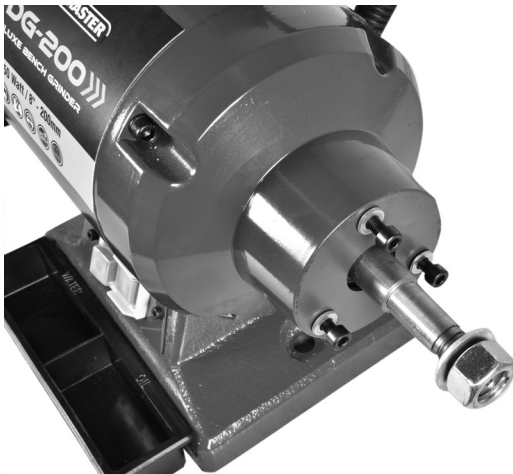


WARNING!

Before operating any machine, take time to read and understand all safety signs and symbols. If not understood seek explanation from your supervisor or an experienced operator.

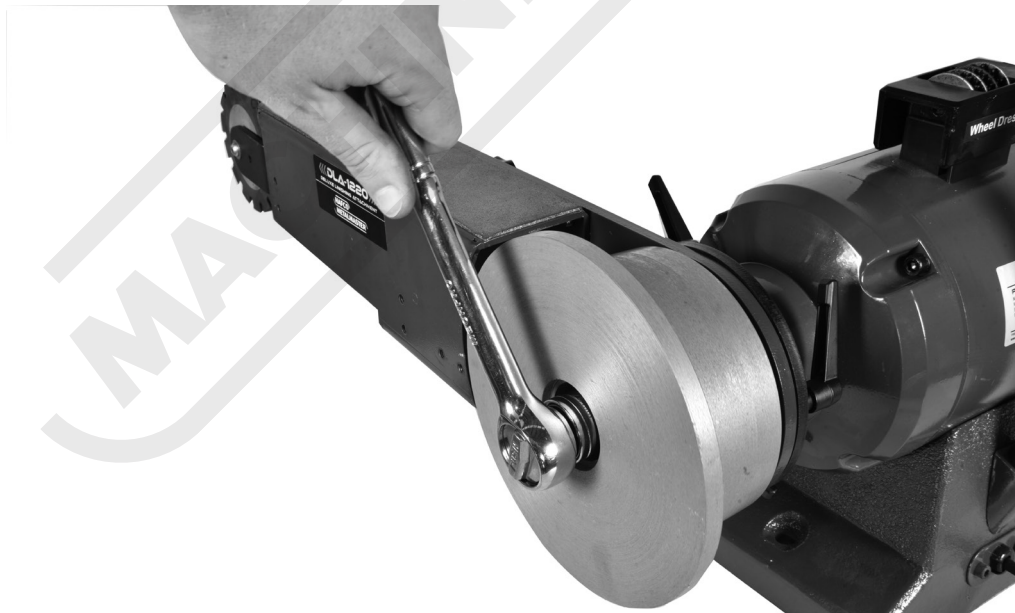
INSTALL SANDING BELT FRAME

2. Remove the right hand grinding wheel and guard, and keep the nut and grinding wheel flange to be used later.
3. Install the finishing belt frame onto the grinder with the guard bolts and washers then tighten them.
NOTE: The slots are designed to accommodate most Ø200mm grinders.



INSTALL THE ALUMINIUM DRIVING WHEEL

4. Install the aluminium driving wheel onto the wheel shaft of the grinder. Install the grinding wheel flange washer and tighten the nut.

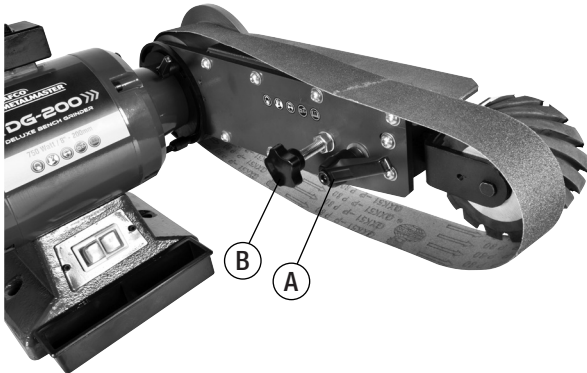


WARNING!

Serious injury could occur if you connect machine to power before completing the setup process. DO NOT connect to power until all assembly and adjusting processes are complete.

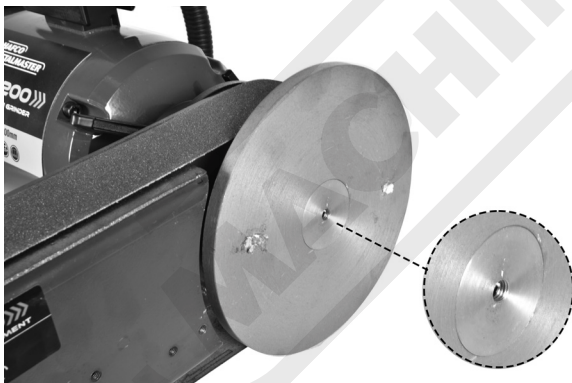
INSTALLING THE SANDING BELT

5. Turn the tension lock lever (A) and the rubber wheel will retract and hold the frame in place to allow the belt to be installed.
 - a. Install the sanding belt, making sure that the arrow on the back of the belt is running in the correct direction, then turn the tension lock lever and the spring loaded tension will tighten the sanding belt.
 - b. Turn the sanding belt by hand according to the arrow direction to check that the belt is tracking correctly.
 - c. Adjust the tracking knob (B) for fine adjustment.



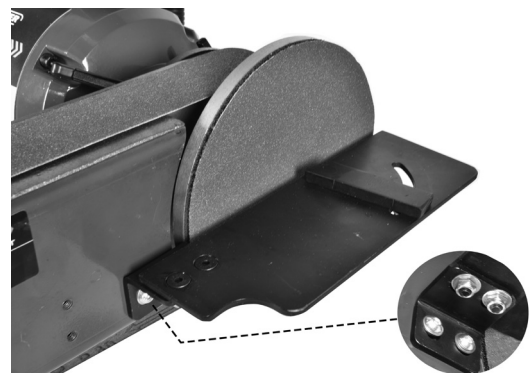
INSTALL THE SANDING DISC

6. Install the centre plug on the aluminium wheel.
7. Tear the backing paper off the hook & loop disc, align and stick it onto the Aluminium driving wheel.
8. Attach the sanding disc to the velcro backing disc and press firmly to ensure it is attached.



ATTACHING THE WORK TABLE

9. Attach the worktable to the frame using the bracket and bolts supplied.
10. Adjust the worktable so that it is close but not touching the sanding disc.



ADJUSTING THE TRACKING

1. Turn the sanding belt by hand according to the arrow direction to check that the belt is tracking correctly. If it runs to one side of the rubber wheel then adjust the tracking so that it tracks in the middle of the rubber wheel.
2. Connect the power to the machine and turn the machine on. Make the final tracking by turning the tracking knob until the belt runs in the middle of the rubber wheel.



OPERATIONAL PROCEDURES

The Deluxe Linishing Attachment is designed to be used in many positions.

To set the position desired, undo the three lever clamps and rotate the frame to the position required. Then re-clamp the frame.

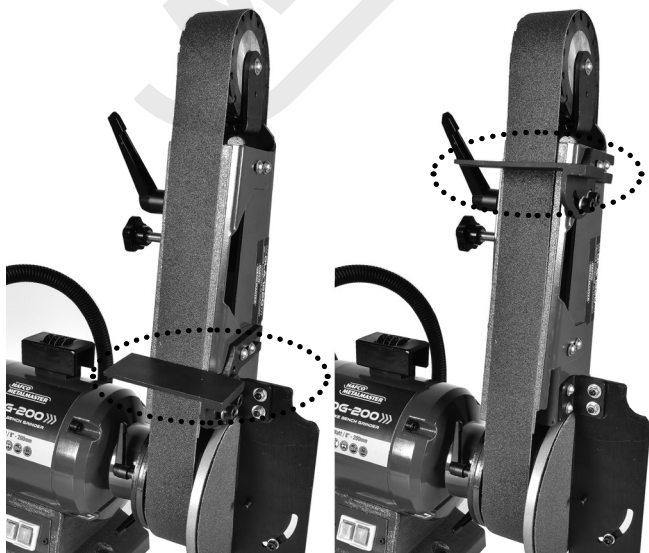
NOTE: Do Not operate the attachment with the frame loose. The three handles must be clamped before use.



MOUNTING THE VERTICAL TABLE

The vertical table can be used in two positions on the main frame by undoing the bolts and moving the table to the other position.

The table can also be tilted in both positions so the attachment can be set up for sharpening tools.



FITTING THE END WORKTABLE

Mount the end table to the main frame using bolts as pictured to the right.

The table can also be tilted so the attachment can be set up for sharpening tools such as chisels and cutting tools.



WARNING

General Machinery Safety Instructions

Machinery House
requires you to read this entire Manual before using this machine.

- 1. Read the entire Manual before starting machinery.** Machinery may cause serious injury if not correctly used.
- 2. Always use correct hearing protection when operating machinery.** Machinery noise may cause permanent hearing damage.
- 3. Machinery must never be used when tired, or under the influence of drugs or alcohol.** When running machinery you must be alert at all times.
- 4. Wear correct Clothing.** At all times remove all loose clothing, necklaces, rings, jewelry, etc. Long hair must be contained in a hair net. Non-slip protective footwear must be worn.
- 5. Always wear correct respirators around fumes or dust when operating machinery.** Machinery fumes & dust can cause serious respiratory illness. Dust extractors must be used where applicable.
- 6. Always wear correct safety glasses.** When machining you must use the correct eye protection to prevent injuring your eyes.
- 7. Keep work clean and make sure you have good lighting.** Cluttered and dark shadows may cause accidents.
- 8. Personnel must be properly trained or well supervised when operating machinery.** Make sure you have clear and safe understanding of the machine you are operating.
- 9. Keep children and visitors away.** Make sure children and visitors are at a safe distance for you work area.
- 10. Keep your workshop childproof.** Use padlocks, Turn off master power switches and remove start switch keys.
- 11. Never leave machine unattended.** Turn power off and wait till machine has come to a complete stop before leaving the machine unattended.
- 12. Make a safe working environment.** Do not use machine in a damp, wet area, or where flammable or noxious fumes may exist.
- 13. Disconnect main power before service machine.** Make sure power switch is in the off position before re-connecting.
- 14. Use correct amperage extension cords.** Undersized extension cords overheat and lose power. Replace extension cords if they become damaged.
- 15. Keep machine well maintained.** Keep blades sharp and clean for best and safest performance. Follow instructions when lubricating and changing accessories.
- 16. Keep machine well guarded.** Make sure guards on machine are in place and are all working correctly.
- 17. Do not overreach.** Keep proper footing and balance at all times.
- 18. Secure workpiece.** Use clamps or a vice to hold the workpiece where practical. Keeping the workpiece secure will free up your hand to operate the machine and will protect hand from injury.
- 19. Check machine over before operating.** Check machine for damaged parts, loose bolts, Keys and wrenches left on machine and any other conditions that may effect the machines operation. Repair and replace damaged parts.
- 20. Use recommended accessories.** Refer to instruction manual or ask correct service officer when using accessories. The use of improper accessories may cause the risk of injury.
- 21. Do not force machinery.** Work at the speed and capacity at which the machine or accessory was designed.
- 22. Use correct lifting practice.** Always use the correct lifting methods when using machinery. Incorrect lifting methods can cause serious injury.
- 23. Lock mobile bases.** Make sure any mobile bases are locked before using machine.
- 24. Allergic reactions.** Certain metal shavings and cutting fluids may cause an allergic reaction in people and animals, especially when cutting as the fumes can be inhaled. Make sure you know what type of metal and cutting fluid you will be exposed to and how to avoid contamination.
- 25. Call for help.** If at any time you experience difficulties, stop the machine and call you nearest branch service department for help.



WARNING

Linisher/Disc Sander Safety Instructions

Machinery House
requires you to read this entire Manual before using this machine.

- 1. Maintenance.** Make sure the sander is turned off and disconnect from the main power supply and make sure all moving parts have come to a complete stop before any inspection, adjustment or maintenance is carried out.
- 2. Sander Condition.** Sander must be maintained for a proper working condition. Never operate a sander that has damaged or worn parts. Scheduled routine maintenance should performed on a scheduled basis.
- 3. Disc/Belt Condition.** Never operate a sander with a damaged or badly worn disc or belt. Replace if required.
- 4. Disc/Belt Rotation.** Be aware of the Disc and Belt rotation when sanding.
- 5. Hand Hazard.** Keep hands and fingers clear from moving parts. Serious injury can occur.
- 6. Leaving a sander Unattended.** Always turn the sander off and make sure all moving parts have come to a complete stop before leaving the sander. Do not leave sander running unattended for any reason.
- 7. Avoiding Entanglement.** Sander guards must be used at all times. Remove loose clothing, belts, or jewelry items. Never wear gloves while machine is in operation. Tie up long hair and use the correct hair nets to avoid any entanglement with the sander moving parts.
- 8. Understand the machines controls.** Make sure you understand the use and operation of all controls.
- 9. Power outage.** In the event of a power failure during use of the Linisher, turn off all switches to avoid possible sudden start up once power is restored.
- 10. Work area hazards.** Keep the area around the sander clean from oil, tools, chips. Pay attention to other persons in the area and know what is going on around the area to ensure unintended accidents.
- 11. Workpiece Handling.** Never hold small workpieces with your fingers during a cut. Always support/feed the workpiece with push stick, table support, vice, or some sort of clamping fixture.
- 12. Hearing protection and hazards.** Always wear hearing protection as noise generated from sander and workpiece vibration can cause permanent hearing loss over time.
- 13. Dust hazards.** Always wear dust mask or respirator and eye protection when sanding. Use a dust collector as well to keep dust to a minimum.
- 14. Feeding material.** Always feed material evenly and smoothly against the direction of rotation. Never use excessive force when sanding or serious injury can occur.
- 15. Job Material.** Check material prior to sanding for nails, staple and other objects that make cause any danger when sanding.
- 16. Starting position/speed.** Never turn the sander on when the workpiece is resting on the disc or belt. Allow disc and belt to reach full speed before sanding.
- 17. Disc sanding.** Keep workpiece down toward the table whilst sanding. Workpiece may cause serious injury if not held correctly.
- 18. Guards.** Do not operate sander without the correct guards in place.
- 19. Stopping the Disc/Belt.** Do not stop or slow the Disc or Belt with your hand or workpiece. Allow the machine to stop on its own.
- 20. Wood dust may cause allergic reactions.** Make sure you know what type of dust you are exposed to as it may cause you an allergic reaction. Always wear an approved respirator.
- 21. Call for help.** If at any time you experience difficulties, stop the machine and call you nearest branch service department for help.

PLANT SAFETY PROGRAM

NEW MACHINERY HAZARD IDENTIFICATION, ASSESSMENT & CONTROL

Linisher-Disc Sander

Developed in Co-operation Between A.W.I.S.A and Australia Chamber of Manufactures
This program is based upon the Safe Work Australia, Code of Practice - Managing Risks of Plant in the Workplace (WHSA 2011 No10)

Item No.	Hazard Identification	Hazard Assessment	Risk Control Strategies (Recommended for Purchase / Buyer / User)
A	ENTANGLEMENT	HIGH	Eliminate, avoid loose clothing / Long hair etc.
C	CUTTING, STABBING, PUNCTURING	MEDIUM	Isolate power to machine prior to any checks or maintenance being carried out. Do not adjust or clean machine until the machine has fully stopped.
D	SHEARING	MEDIUM	Always keep gap between table and disc to a minimum. Make sure all guard are secured shut when machine is on.
E	FRICTION	MEDIUM	Keep hands and body clear from sanding disc/belt.
F	STRIKING	MEDIUM	Wear appropriate protective clothing. Wear safety glasses.
			Stand clear of moving parts on machine. Remove all loose objects around moving parts. Ensure belts are in good condition and at correct tension. Always sand on the down stroke of the disc's rotation.
H	ELECTRICAL	MEDIUM	All electrical enclosures should only be opened with a tool that is not to be kept with the machine.
O	OTHER HAZARDS, NOISE, DUST.	LOW	Wear hearing protection as required. Must be connected to a dust extraction.
Plant Safety Program to be read in conjunction with manufactures instructions			



www.machineryhouse.com.au



www.machineryhouse.co.nz

Authorised and signed by:
Safety officer:

Manager:

Revised Date: 12th March 2012



ENVIRONMENT PROTECTION

Recycle unwanted materials instead of disposing of them as waste. All tools, accessories and packaging should be sorted, taken to a recycling centre and disposed of in a manner which is compatible with the environment. When the product becomes completely unserviceable and requires disposal, drain any fluids (if applicable) into approved containers and dispose of the product and fluids according to local regulations.

IMPORTED BY

HARE & FORBES
MACHINERYHOUSE

Australian Distributor

Hare & Forbes
Machineryhouse

Sydney - Melbourne
Adelaide - Brisbane - Perth

Ph: 1300 202 200
www.machineryhouse.com.au

MACHINERYHOUSE

New Zealand Distributor

Machineryhouse
Auckland
Christchurch

Ph: 0800 142 326
www.machineryhouse.co.nz